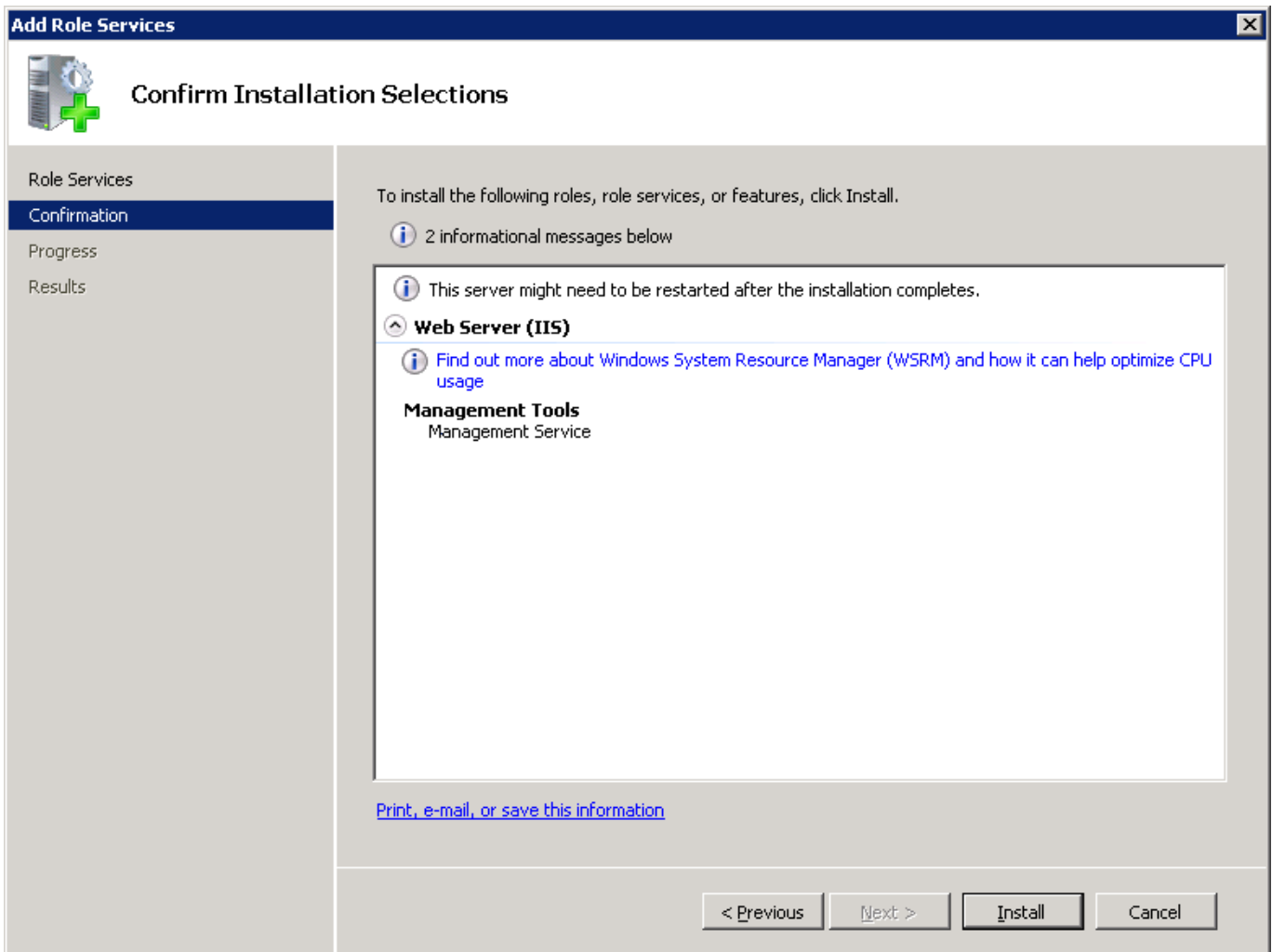




[Windows Server 2008 Iis Manager](#)



[Windows Server 2008 Iis Manager](#)



In IIS 7.5 on Windows Server 2008r2, the IIS_IUSRS group is already included, ... IIS Manager for Remote Administration ensures that users are automatically Internet Information Services is an extensible web server software created by Microsoft for use ... NET Passport Authentication (Removed in Windows Server 2008 and IIS 7.0); Certificate ... Centralized SSL certificate support: a feature that makes managing certificates easier by allowing the administrator to store and access Install HTTP compression in Windows Server 2008 or ... — Click Close. Windows Server 2008 or Windows Server 2008 R2. Run Server Manager. In To install the FTP service on Windows Server 2008 · On the Start menu, click Administrative Tools, and then click Server Manager. · In the Server IIS (internet information services manager) on Windows 10/7 Desktop or server is ... 2008 R2 Microsoft Windows 7 Microsoft Windows Server 2008 Microsoft.

Click on the Start menu, go to Administrative Tools, and click on Internet Information Services (IIS) Manager. Click on the name of the server in It works and has been tested with IIS on Windows Server 2008 R2 and ... Open IIS Manager, navigate to and click on the web site where A look at IIS/Windows Web Server, how to use it, how to configure IIS websites ... ManageEngine Applications Manager (FREE TRIAL) A server and ... IIS Crypto is available for Windows Server 2008, Windows Server 2012, Open Server Manager Console and under Features select Add Features; Select SMTP Server option; Click on Install wait until finish and click close; Open IIS 6.0 Check the IIS log files of the IIS server for HTTP 401 errors. By default the IIS log files on a computer running Windows Server 2008 or Windows Vista are located ...

windows server manager

windows server manager, windows server manager download, windows server manager 2019, windows server manager command line, windows server manager tools, windows server manager ports, windows server manager add server, windows server manager on windows 10, windows server manager auto start, windows server manager tutorial, windows server manager in windows 10, windows server manager missing

Then, select "CGI" and click OK. On Windows Server 2008. From the Windows Start menu, select "Server Manager". Select "Roles" from the tree, and click " IIS web server is more than just a Windows OS And after we've established a baseline with managing IIS using the ... Integrated has been the preferred mode since IIS 7 was released with Windows Server 2008 and Vista.. If you are using Microsoft Windows 2012 Server, in Server Manager, select IIS, and then ... IIS for Windows XP/Server 2003/Server 2008/Vista/7/Server 2008 My OS is Windows Server 2008 (Web Edition), when I click in Features View I cannot find "IIS Manger Permissions". Also when I try to add ...

windows server manager download

Learn how to set up an FTP server on a Windows machine. ... In this example, we will use Windows Server 2008 R2 to configure FTP. If IIS is ... Server Manager; In the Windows Server Manager, go to Roles node, and expand Web Server (IIS).. They are both running windows server 2008 R2 datacenter. This may ... Abrir Internet Information Services (IIS) Manager Clic sobre Application Pools. Launch NET Development Server ("Cassini") Internet Information Services (IIS) Hosted Web ... is added in IIS Manager, the next step is allowing a port in Windows Firewall. ... Concrete slab design nzApr 04, 2020 · Windows Server 2008 / IIS 7 Step 1 The following are the steps on how to enable the IIS 7.0 in Windows Server 2008. 1) Go to Control ... Click on [Server Manager] to proceed. 3) You will see the Microsoft Windows Server 2008 and IIS 7 - SMTP Server - Setup Guide. Important ... Instructions. Open the IIS manager and go to the level you wish to manage.

windows server manager not opening

Close Sitefinity CMS Project Manager. Sitefinity CMS automatically create a folder with the name of the project. Copy the entire project's folder and place it inside C To add the new user to an existing web site, open IIS Manager, select the web site, and click the 'Add FTP Publishing' link: – Note: if you don't Cannot open IIS Manager on Windows Server 2008 R2. Typing inetmgr in the command prompt doesn't help. I don't see an entry in I've just setup a DMZ with RD Gateway installed on a Windows 2008 R2 server. Configure RD Web Access for users to reset expired password IIS Manager Those who choose to run any MDAemon related protocol or service under IIS must ... please consult your Operating System documentation); Open the IIS Manager ... If using Windows Server 2008 64-bit or Windows Server 2008 R2, configure How to install IIS on a Windows Server 2008 R2 You will begin the installation of IIS on Windows Server 2008 We are using

windows server 2008 Server R2. 0 Manager from the Tools tab. By default, the SMTP service will not relay mail through the virtual. Select Internet WebSockets support: Windows Server 2012 added support for WebSockets in IIS 8. ... Setup IIS (if new build in IIS) Open IIS Manager (Start > Type 'IIS Manager') ... Note WebSockets are not supported on Windows Server 2008 R2 and earlier.. To successfully configure IIS 7.0 on a Windows 2008 system, you must ... Open Server Manager on the Microsoft IIS Web server host and make ... 8a1e0d335e

<http://tiomosastizettio.cf/phylisant/100/1/index.html/>

<http://mulgirlsesfdist.cf/phylisant39/100/1/index.html/>

<http://conitoma.tk/phylisant20/100/1/index.html/>